

Inner-Vision TECHNOLOGY

an Insight Medical Products Limited Company



PRODUCT CATALOGUE 2023/2024



Tough-PAC

Contents Page

Tablet Cases & Cradles

- Tablet Case for iPad 7th, 8th & 9th Gen 10.2" and Air3 10.5"
- Tablet Case for iPad 10th Gen 10.9" (2022), Air4 and Air5 10.9"
- 4 iPad Dock Multi Charging Station for iPad 7th, 8th & 9th Gen 10.2", Air3 10.5" and 10th Gen 10.9", Air4 & Air5 10.9"
- Single Desktop Cradle for iPad 7th, 8th & 9th Gen 10.2", Air3 10.5" and 10th Gen 10.9", Air4 & Air5 10.9"
- Wall Mount for Tablet Case iPad 7th, 8th & 9th Gen 10.2", Air3 10.5" and 10th Gen 10.9", Air4 & Air5 10.9"
- Tablet Case for iPad Mini 6th Gen
- 4 Dock Multi Charging Station for iPad Mini 6th Gen
- Single Dock Charging Station for iPad Mini 6th Gen
- Accessories

PDA (Personal Digital Assistant) Case & Cradles

- PDA case for iPod Touch 5th, 6th and 7th Gen
- 4 Port Cradle for Tough-PAC® PDA Cases
- Desktop 'One' Mount for Tough-PAC® PDA Cases
- Tough-PAC® Case and Cradle - Problems Solved
- Accessories
- iPhone Cases
- Anti-Bacterial Glass Screen Protector
- Secure Locker for PDA

Tough-PAC®

Tough-PAC® Case

For iPad 7th, 8th & 9th Gen
10.2" and Air3 10.5"



Tough-PAC® Tablet is a hard shell anti-microbial enclosure and docking system for iPad 7th, 8th, 9th Gen 10.2" and Air3 10.5" designed for use in healthcare or other hygiene sensitive environments.

Tough-PAC® provides all round protection against workplace damage, knocks and fluids, and inhibits or destroys surface contaminating bacteria, fungi, moulds and viruses.

With busy staff in mind, Tough-PAC® has 'Simply-Dock' cradles, multi-docks and VESA wall mounts, removing the need for plugging in cables for routine charge or synchronicity functions - complete flexibility.

These cases include an antibacterial tempered glass screen as standard providing 360° protection against potentially harmful surface contamination.

Tough-PAC® Tablet Cases for iPad add quiet, secure confidence, safety, ease of use, low maintenance and peace of mind.

IVT CODE

DESCRIPTION

TP001-105-White	Tablet Case iPad 7th, 8th & 9th Gen 10.2", Air3 10.5" Lightning Cable - White
TP001-105-Grey	Tablet Case iPad 7th, 8th & 9th Gen 10.2", Air3 10.5" Lightning Cable - Grey
TP001-105-Lilac	Tablet Case iPad 7th, 8th & 9th Gen 10.2", Air3 10.5" Lightning Cable - Lilac
TP001-105-Orange	Tablet Case iPad 7th, 8th & 9th Gen 10.2", Air3 10.5" Lightning Cable - Orange
TP001-105-Blue	Tablet Case iPad 7th, 8th & 9th Gen 10.2", Air3 10.5" Lightning Cable - Blue

Tough-PAC® Case for iPad 7th, 8th, 9th Gen 10.2" and Air3 10.5"



Key Features & Benefits

- Anti-microbial hard shell protection for iPad.
- Cleanable with anti-microbial wipes or sprays (*See Website for approved wipes and sprays*)
- Protection for all ports and buttons against ingress of dust and fluids
- Shock protection
- Replaceable antibacterial tempered glass screen protector
- Simply-Dock® cradles for charging and data synchronisation*
- Carry Handle
- Compatible with iPad 7th, 8th and 9th Gen 10.2", Air3 10.5"
- Custom colours available (*Minimum orders required*)
- Camera port for iPad

Technical Specifications

- Biomaster anti-microbial technology
- UL and CSA approved flame retardant ABS plastic
- Standard USB 2.0 connectivity
- No loss of WiFi and Bluetooth connectivity
- Case Weight (including iPad): 1.02 kg
- Size: 33.5 x 21.5 x 2.7 cm
- CE, FCC and EMC Certified

*USB Hub interface functions with Windows or Mac PCs & Apple Configurator and MDM Software



99.9% reduction of surface contamination ISO 22196 tests.
<60% reduction of SARS-COV2 vs controls ISO 21702

iPad® is trademark of Apple Inc., registered in the U.S. and other countries.

Inner-Vision
TECHNOLOGY

an Insight Medical Products Limited Company



Tough-PAC®

Tough-PAC® Case

For iPad 10th Gen 10.9"
(2022), Air4 and Air5 10.9"



Tough-PAC® Tablet is a hard shell anti-microbial enclosure and docking system for iPad 10th Gen 10.9" (2022), Air4 and Air5 10.9", designed for use in healthcare or other hygiene sensitive environments.

Tough-PAC® provides all round protection against workplace damage, knocks and fluids, and inhibits or destroys surface contaminating bacteria, fungi, moulds and viruses.

With busy staff in mind, Tough-PAC® has 'Simply-Dock' cradles, multi-docks and VESA wall mounts, removing the need for plugging in cables for routine charge or synchronicity functions - complete flexibility.

These cases include an antibacterial tempered glass screen as standard providing 360° protection against potentially harmful surface contamination.

Tough-PAC® Tablet Cases for iPad 10th Gen 10.9" (2022), Air4 and Air5 10.9" add quiet, secure confidence, safety, ease of use, low maintenance and peace of mind.

IVT CODE

DESCRIPTION

TP001-10G-White	Tablet Case iPad 10th Gen 10.9", Air4 & Air5 10.9" C Cable - White
TP001-10G-Grey	Tablet Case iPad 10th Gen 10.9", Air4 & Air5 10.9" C Cable - Grey
TP001-10G-Orange	Tablet Case iPad 10th Gen 10.9", Air4 & Air5 10.9" C Cable - Orange
TP001-10G-Blue	Tablet Case iPad 10th Gen 10.9", Air4 & Air5 10.9" C Cable - Blue

Tough-PAC® Case for iPad 10th Gen 10.9", Air4 and Air5 10.9"



Key Features & Benefits

- Anti-microbial hard shell protection for iPad
- Cleanable with anti-microbial wipes or sprays (*See Website for approved wipes and sprays*)
- Protection for all ports and buttons against ingress of dust and fluids
- Shock protection
- Simply-Dock® cradles for charging and data synchronisation*
- Replaceable antibacterial tempered glass screen protector
- Carry Handle
- Compatible with iPad 10th Gen 10.9", Air4 and Air5 10.9"
- Custom colours available (*Minimum orders required*)
- Removeable camera port for iPad

Technical Specifications

- Biomaster anti-microbial technology
- UL and CSA approved flame retardant ABS plastic
- Standard USB 2.0 connectivity
- No loss of WiFi and Bluetooth connectivity
- Case Weight (including iPad): 1.02 kg
- Size: 33.5 x 21.5 x 2.7 cm
- CE, FCC and EMC Certified

*USB Hub interface functions with Windows or Mac PCs & Apple Configurator and MDM Software

99.9% reduction of surface contamination ISO 22196 tests.
<60% reduction of SARS-COV2 vs controls ISO 21702

iPad® is trademark of Apple Inc., registered in the U.S.
and other countries.

Inner-Vision
TECHNOLOGY

an Insight Medical Products Limited Company



Tough-PAC®

Charging Station CS4

For iPad 7th, 8th, 9th Gen
10.2", Air3 10.5" and 10th
Gen 10.9", Air4 & Air5 10.9"



Tough-PAC®'s versatility as a mobile tablet PC is further enhanced by the Charging Station CS4, allowing intelligent charging or synchronising up to 4 Tough-PAC® units simultaneously using 'Simply-Dock' interface technology.

Intended for teams or busy departments, the CS4 cradle may be located in any desktop location, even inside a suitable cabinet for added security.

For IT management, CS4 has its own optimised USB hub that delivers precise power for charging and allows data management via a USB cable for up to 4 iPads at the same time.

IVT CODE

DESCRIPTION

TP0702SB/UK

Multi-Charge Station 'CS-4' Hub (4 way) with UK Adapter

TP0702SB/EU

Multi-Charge Station 'CS-4' Hub (4 way) with EU Adapter

TP0702SB/USA

Multi-Charge Station 'CS-4' Hub (4 way) with USA Adapter

Tough-PAC® 4 Dock Multi Charging Station For iPad 7th, 8th, 9th Gen 10.2", Air3 10.5" and 10th Gen 10.9", Air4 & Air5 10.9"



Key Features & Benefits

- Cleanable with moist anti-microbial wipes or sprays (See Website for approved wipes and sprays)
- Intelligent charging or synchronising up to 4 devices simultaneously. Provides up to 2Amps power on demand in standard and 1.5Amps in USB modes
- LED indicators of device charge level
- DC Power supply allows easy location inside cabinets or similar
- Use, dock and go - no cables required to plug into devices
- Compatible with iPad 7th, 8th, 9th Gen 10.2", Air3 10.5" and iPad 10th Gen 10.9", Air4 & Air5 10.9"
- Available for UK, EU, US and Worldwide

Technical Specifications

- 'Simply-Dock' USB interface technology*
- Optimised USB 2.0 Hub Management
- 12v5A DC power supply, efficiency Level VI
- Weight of dock: 2.31 kg
- Size of dock: 25 x 35 x 7 cm
- CE, FCC and EMC Certified

*USB Hub interface functions with Windows or Mac PCs & Apple Configurator and MDM Software



99.9% reduction of surface contamination ISO 22196 tests.
<60% reduction of SARS-COV2 vs controls ISO 21702

iPad® is trademark of Apple Inc., registered in the U.S. and other countries.

Tough-PAC®

Tough-PAC® Single Dock Charging Station

For iPad 7th, 8th, 9th Gen 10.2", Air3 10.5" and 10th Gen 10.9", Air4 & Air5 10.9"

Tough-PAC® Single Dock Charging Station is a docking station for iPad, designed for use in healthcare or other strict environments.



Tough-PAC® has 'Simply-Dock' desktop cradles that complement the iPad tablet cases, removing the need for plugging in cables for routine charge* or synchronicity functions.

The desktop cradle allows use in either landscape or portrait modes when not charging, making it a useful workstation.

* The Apple USB or equivalent 2.1A power adapter should be used for charging.
(The type of USB Cable used (USB Type A or USB Type C) is dependent upon on the existing power adapter that is supplied with the iPad.)



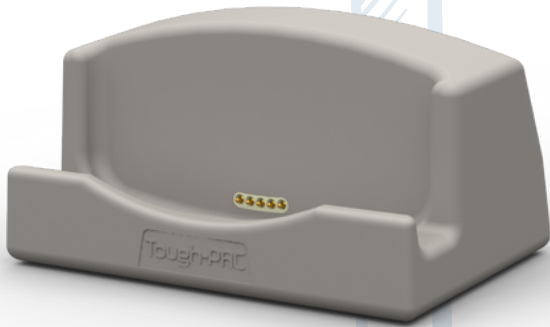
USB Type A



USB Type C

IVT CODE	DESCRIPTION
TP013USB	Desktop Charge and Sync Cradle 0.8m USB Type A (2.0 Connectivity)
TP013USB-C	Desktop Charge and Sync Cradle 0.8m USB Type C (2.0 Connectivity)

Tough-PAC® Single Dock Charging Station for iPad 7th, 8th & 9th Gen 10.2", Air3 10.5" and 10th Gen 10.9", Air4 & Air5 10.9"



Key Features & Benefits

- Anti-microbial Charging Dock for iPads
- Cleanable with anti-microbial wipes or sprays (See *Website for approved wipes or sprays*)
- Simply-Dock® cradles for charging and data synchronisation*
- Compatible with Tough-PAC® Case for iPad 7th, 8th, 9th Gen 10.2", Air3 10.5" and 10th Gen 10.9", Air4 & Air5 10.9"



Technical Specifications

- Biomaster anti-microbial technology
- UL and CSA approved flame retardant ABS plastic
- Standard USB 2.0 connectivity
- Uses existing iPad power adapter
- Weight of dock: 0.51 kg
- Size of dock: 12 x 25 x 12.5 cm
- CE, FCC and EMC Certified

*USB Hub interface functions with Windows or Mac PCs & Apple Configurator and MDM Software

99.9% reduction of surface contamination ISO 22196 tests.
<60% reduction of SARS-COV2 vs controls ISO 21702

iPad® is trademark of Apple Inc., registered in the U.S. and other countries.

Inner-Vision
TECHNOLOGY

an Insight Medical Products Limited Company



Tough-PAC®

Wall Mount

For iPad 7th, 8th & 9th Gen 10.2", Air3 10.5" and 10th Gen 10.9", Air4 & Air5 10.9"

Wherever it may be required, the Tough-PAC® Wall Mount can be fixed to a suitable vertical surface.

The Wall Mount provides charging function when docked and may be rotated in to either portrait or landscape orientation.

The iPad's power supply is conveniently hidden and secured in a shelf behind the face plate. A mains cable is used to provide the power supply.

VESA Mounting Plate (75mm or 100mm) can be supplied for use with extendable arms.

The sturdy steel construction is coated with anti-microbial paint finish.



TP084WM

VESAPLATE

IVT CODE	DESCRIPTION
TP084WM	Wall Mount Charge and Sync Cradle (USB)
VESAPLATE	VESA Connector Plate 75mm or 100mm

Wall Mount For Tough-PAC® Tablet Cases for iPad 7th, 8th & 9th Gen 10.2", Air3 10.5" and 10th Gen 10.9", Air4 & Air5 10.9"

Key Features & Benefits

- Anti-microbial coating as standard
- Cleanable with anti-microbial wipes or sprays (*See Website for approved wipes and sprays*)
- Fixed position mounting for Tough-PAC® iPad Cases
- Charging in any position when docked
- Rotate 180° for Portrait or Landscape use
- Hidden Shelf for 12W USB Power Adapter (*Not supplied*)
- Compatible with Tough-PAC® Tablet Cases for iPad 7th, 8th & 9th Gen 10.2", Air3 10.5" and iPad 10th Gen 10.9", Air4 & Air5 10.9"
- Optional Kensington 'Micro-Saver' lock for added physical security

Technical Specifications

- Anti-microbial technology
- Standard USB 2.0 connectivity
- Uses Apple 12w USB power supply (*Not supplied*)
- Macbook mains extension cable 1.8m (*Supplied*)
- Weight of mount: 1.48 kg
- Size of mount: 25 x 23 x 3 cm

(For correct fitting requirements please contact the office for further advice)

99.9% reduction of surface contamination ISO 22196 tests.
<60% reduction of SARS-COV2 vs controls ISO 21702

iPad® is trademark of Apple Inc., registered in the U.S. and other countries.

Inner-Vision
TECHNOLOGY

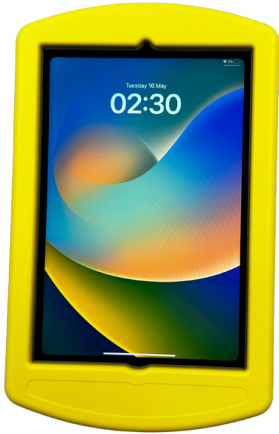
an Insight Medical Products Limited Company



Tough-PAC®

Tough-PAC® Case

For iPad Mini 6th Gen



Tough-PAC® Tablet is a hard shell anti-microbial enclosure and docking system for the iPad Mini 6th Gen, designed for use in healthcare or other hygiene sensitive environments.

Tough-PAC® provides all round protection against workplace damage, knocks and fluids, and inhibits or destroys surface contaminating bacteria, fungi, moulds and viruses.

With busy staff in mind, Tough-PAC® has rapid 'Simply-Dock' cradles, multi-docks and VESA wall mounts, removing the need for plugging in cables for routine charge or synchronicity functions - complete flexibility.

These cases include an antibacterial tempered glass screen as standard, providing 360° protection against potentially harmful surface contamination.

Tough-PAC® Tablet Cases for iPad Mini 6th Gen add quiet, secure confidence, safety, ease of use, low maintenance and peace of mind.



IVT CODE

DESCRIPTION

TP400-Grey	Tablet Case iPad Mini 6th Generation – Grey
TP400-Blue	Tablet Case iPad Mini 6th Generation – Blue
TP400-Green	Tablet Case iPad Mini 6th Generation – Green
TP400-Yellow	Tablet Case iPad Mini 6th Generation – Yellow

Tough-PAC® Case for iPad Mini 6th Gen

Key Features & Benefits

- Anti-microbial hard shell protection for iPad Mini 6th Gen
- Cleanable with anti-microbial wipes or sprays (*See Website for approved wipes and sprays*)
- Protection for all ports and buttons against ingress of dust and fluids.
- Shock protection
- Replaceable antibacterial tempered glass screen protector
- Simply-Dock® cradles for charging and data synchronisation*
- Compatible with iPad Mini 6th Gen models
- Custom colours available (*Minimum orders required*)
- Removeable camera port for iPad

Technical Specifications

- Biomaster anti-microbial technology
- UL and CSA approved flame retardant ABS plastic
- Standard USB 2.0 connectivity
- No loss of WiFi and Bluetooth connectivity
- Case Weight (including iPad): 0.57 kg
- Size: 25 x 15.5 x 2 cm
- CE, FCC and EMC Certified

*USB Hub interface functions with Windows or Mac PCs & Apple Configurator and MDM Software

99.9% reduction of surface contamination ISO 22196 tests.
<60% reduction of SARS-COV2 vs controls ISO 21702

iPad® is trademark of Apple Inc., registered in the U.S. and other countries.

Inner-Vision
TECHNOLOGY

an Insight Medical Products Limited Company



Tough-PAC®

4 Dock Charging Station

For iPad Mini 6th Gen

Tough-PAC®'s versatility as a mobile tablet PC is further enhanced by the Charging Station, allowing intelligent charging or synchronising up to 4 Tough-PAC® units simultaneously using 'Simply-Dock' interface technology.

Intended for teams or busy departments, the 4 Dock Charging Station may be located in any desktop location, even inside a suitable cabinet for added security.



For IT management, the 4 Dock Charging Station has its own optimised USB hub that delivers precise power for charging and allows data management via USB for up to 4 iPad Mini 6th Gen tablets at the same time.

Single Dock Charging Station

For iPad Mini 6th Gen



Tough-PAC® has rapid 'Simply-Dock' that complements the iPad Mini Tablet Cases, removing the need for plugging in cables for routine charge or synchronicity functions.

The Apple USB or equivalent 2.1A power adapter should be used for charging.

IVT CODE	DESCRIPTION
TP440-4/UK	4 Way Multi-Charging Station Dock (UK Adapter)
TP440-4/EU	4 Way Multi-Charging Station Dock (EU Adapter)
TP440-4/USA	4 Way Multi-Charging Station Dock (USA Adapter)
TP440-1	Desktop Single Dock Charging Station (USB-C)

Tough-PAC® Charging Stations for iPad Mini 6th Gen

4 Dock Charging Station

Key Features & Benefits

- Intelligent charging or synchronising up to 4 devices simultaneously. Provides up to 2Amps power on demand in standard and 1.5Amps in USB modes.
- LED indicators of device charge level
- DC power supply allows easy location inside cabinets or similar
- Use, dock and go - no cables required to plug into devices
- Compatible with iPad Mini 6th Gen Tough-PAC® cases
- Available for UK, EU, US and Worldwide

Technical Specifications

- Optimised USB 2.0 Hub Management
- 'Simply-Dock' USB interface technology
- 12v5A DC power supply, efficiency Level VI
- Weight of dock: 2.20 kg
- Size of dock: 24.2 x 30 x 7.6 cm
- CE, FCC and EMC Certified



Single Dock Charging Station

Key Features & Benefits

- Cleanable with anti-microbial wipes or sprays
- Simply-Dock® cradles for charging and data synchronisation*
- Compatible with Tough-PAC® iPad Mini 6th Gen models

Technical Specifications

- Biomaster anti-microbial technology
- UL & CSA approved flame retardant ABS plastic
- Standard USB 2.0 connectivity (*USB-C*)
- Uses existing iPad power adapter
- Weight of dock: 0.99 kg
- Size of dock: 10.6 x 22.8 x 7.4 cm
- CE, FCC and EMC Certified



*USB Hub interface functions with Windows or Mac PCs & Apple Configurator and MDM Software

99.9% reduction of surface contamination ISO 22196 tests.
<60% reduction of SARS-COV2 vs controls ISO 21702

iPad® is trademark of Apple Inc., registered in the U.S. and other countries.

Tough-PAC®

Personal Digital Assistant

For iPod Touch 5th, 6th and 7th Gen



Tough-PAC® Personal Digital Assistant (PDA) is a hard shell anti-microbial case designed for use in healthcare and other tough environments. It protects iPod Touch 5th, 6th or 7th Gen against workplace damage, knocks, fluids and actively inhibits or destroys contaminating harmful bacteria, fungi and moulds. Available in 2 variants for privacy, camera and barcodes.

The convenient desktop cradle, that uses Inner-Vision Technology's rapid 'Simply-Dock®' technology, allows simultaneous charging and/or synchronisation of up to 4 devices at once without plugging in cables.

Tough-PAC® PDA provides protection, convenience, ease of use, low maintenance and peace of mind.

IVT CODE	DESCRIPTION	TYPE
TP516-OPN-White	PDA Case for iPod Touch 5th, 6th & 7th Gen	Open View- White
TP516-CAM-White	PDA Case for iPod Touch 5th, 6th & 7th Gen	Camera View- White
TP516-OPN-Grey	PDA Case for iPod Touch 5th, 6th & 7th Gen	Open View- Grey
TP516-CAM-Grey	PDA Case for iPod Touch 5th, 6th & 7th Gen	Camera View- Grey
TP516-OPN-Orange	PDA Case for iPod Touch 5th, 6th & 7th Gen	Open View- Orange
TP516-CAM-Orange	PDA Case for iPod Touch 5th, 6th & 7th Gen	Camera View- Orange
TP516-OPN-Lilac	PDA Case for iPod Touch 5th, 6th & 7th Gen	Open View- Lilac
TP516-CAM- Lilac	PDA Case for iPod Touch 5th, 6th & 7th Gen	Camera View- Lilac
TP515	PDA 4 Port USB Hub Cradle	(UK Adapter)
TP515-EU	PDA 4 Port USB Hub Cradle	(EU Adapter)
TP515-USA	PDA 4 Port USB Hub Cradle	(USA Adapter)

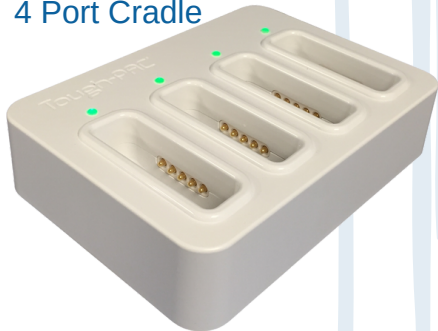
PDA Case and Cradle For iPod Touch 5th, 6th and 7th Gen

Camera View



Open View

TP515
4 Port Cradle



Key Features & Benefits

- Anti-microbial hard shell protection for iPod Touch
- Cleanable with anti-microbial wipes or sprays for all ports and buttons (*See Website for approved wipes and sprays*)
- Protection against ingress of dust and fluids, IP54 Shock protection
- Replaceable anti-microbial glass screen protector
- Simply-Dock® USB Hub for charging and device management*
- LED Charge level indicators
- Optional Open View, Closed View or Camera Window
- Compatible with iPod Touch 5th, 6th and 7th generation

Technical Specifications

- Biomaster anti-microbial technology
- UL and CSA approved flame retardant ABS plastic
- Standard USB 2.0 connectivity
- Tempered glass anti-microbial screen protection
- Device intelligent optimised DC charging
- 5v 12A Level VI Desktop Power Supply
- No loss of WiFi or Bluetooth connectivity
- Case Weight (including iPod): 0.20 kg
- Case Size: 16 x 7.5 x 2.3 cm
- Weight of dock: 0.40 kg
- Dock Size: 19.5 x 14 x 4.5 cm

*USB Hub interface functions with Windows or Mac PCs & Apple Configurator and MDM Software

99.9% reduction of surface contamination ISO 22196 tests.
<60% reduction of SARS-COV2 vs controls ISO 21702

iPad® is trademark of Apple Inc., registered in the U.S. and other countries.

Inner-Vision
TECHNOLOGY

an Insight Medical Products Limited Company



Tough-PAC®

Desktop 'One' Mount

For Tough-PAC® PDA Cases

Wherever it may be required, the Tough-PAC® PDA mount can be stood alone or fixed to a suitable desktop or trolley surface.

The PDA mount provides charging function when docked and when connected to the iPod's USB power supply that may be conveniently hidden and secured beneath the work surface.

The sturdy steel construction is coated with anti-microbial paint finish.



Key Features & Benefits

- Anti-microbial coating as standard
- Cleanable with anti-microbial wipes (*See Website for approved wipes and sprays*)
- Single mount charge and data synchronisation for Tough-PAC® iPod Cases
- Industry leading steel engineering
- Fixed position or stand alone mounting options available

Technical Specifications

- Standard USB 2.0 connectivity
- USB cable 0.9 m
- Weight of mount: 0.15 kg
- Dimensions: diameter 10.5 cm and height 15 cm

99.9% reduction of surface contamination ISO 22196 tests.
<60% reduction of SARS-COV2 vs controls ISO21702

iPad® is trademark of Apple Inc., registered in the U.S. and other countries.

IVT CODE

TP085SD

DESCRIPTION

Single Dock 'One' USB Cradle



Problems Solved For Tough-PAC® Case and Cradle

Tough-PAC® Case and Cradle

Problems Solved

Features & Benefits	Life Proof Nuud	Otter Box	Griffin Survivor	Tough-PAC®
Screen Protector	○	●	●	●
Shock Protection	●	●	●	●
Dust Protection	●	●	●	●
Fluid Protection	●	○	●	●
Physical Security Options	○	○	○	●
Designed for purpose (Health)	○	○	○	●
Anti-microbial Biomaster® Protection- ISO 22196 > 99.6% - ISO 22196 > 99.6%	○	○	○	●
Tested with all approved infection control agents including > 10Kppm bleach**	○	○ ●	○	●
Simply-Dock®, optimised Charge and Sync, USB Hub Cradles	○	○	○	●
Permanently closed protected Ports and Sockets	○	○	○	●
Carry Handle	○	○	○	●
Hidden, protected Charge and Sync Cables	○	○	○	●
Genuine MFi Certified Lightning Cable included	○	○	○	●
Desktop, Surface, Wall Mount and Management Dock options	○	○	○	●
CE/FCC EMC Certified	○	○	○	●

* Branded wipes & sprays - detergent, alcohol, peracetic acid, bleach >10Kppm bleach, Hydrogen peroxide and many others

99.9% reduction of surface contamination ISO 22196 tests.
<60% reduction of SARS-COV2 vs controls ISO 21702

iPad® is trademark of Apple Inc., registered in the U.S. and other countries.

Tough-PAC®

Accessories

STS104



Sealey 1/4"Hex Drive Digital Torque Screwdrivers

- LCD read-out with LED, audible alarm and vibration - indicating achieved and target torque levels
- Pre-set track, peak or desired torque levels using simple push-button menu
- Clockwise and anticlockwise operation
- Selectable read-out in Nm or lb. Ft.
- Accurate to $\pm 1\%$ of stated capacity
- Supplied with test certificate

STS103



Ideal Torque Settings for Tough-PAC®

iPad Cases	0.5nm
iPod Cases	0.1 – 0.2nm

USB-A (Female) To USB-C (Male) Adapter

Simple and effective adaptors that convert a full size USB (Type-A) device to a USB (Type-C) enabled device. For a Single USB Dock it provides 1.5 Amps.



TP715

IVT CODE

DESCRIPTION

STS103	Screwdriver 1/4"Hex Drive (Torque Digital 0.05-5Nm)
STS104	Screwdriver 1/4"Hex Drive (Torque Digital 0-20Nm)
TP715	USB-A (Female) To USB-C (Male) Adapter

Accessories

Tablet Accessories



- Tempered Glass Anti-microbial Screen Cover - iPad 10th Gen 10.9", Air4 and Air5 10.9" (TP005-10G)
- Tempered Glass Anti-microbial Screen Cover - iPad 7th, 8th and 9th Gen 10.2", Air3 10.5" (TP005HG-105)
- Tempered Glass Anti-microbial Screen Cover - iPad Mini 6th Gen (TP413)
- Power Supply (UK) 12v x 5A for Charge Station (TP714-ST)
- Power Supply (EU/USA) 12v x 5A for Charge Station (TP514-ST) - IEC 2m Lead (IEC-EU/IEC-USA)
- Case Connection Lightning MFi Cable (TP011-L) or C Cable (TP011-C)
- Case Screws (TP012 - Set of 10)
- Case Port Plug Set (TP015 - Set of 10)

PDA Accessories

- iPod Touch Anti-microbial Tempered Glass Screen Protector (TP513-AB)
- Power Supply (UK) 12v x 5A for PDA Hub (TP714-ST)
- Power Supply (EU/USA) 12v x 5A for PDA Hub (TP514-ST)
- Case Connection Lightning Cable (TP011-L)
- Case Screws (TP520A - Set of 6)

Wall Mount Accessories

- Optional Kensington 'Micro-Saver' lock on the Wall Mount plate for added physical security.



TP095

IVT CODE	DESCRIPTION	MODEL
TP005-10G	Glass Antimicrobial Screen Cover	iPad 10th Gen 10.9", Air4 & Air5 10.9"
TP005HG-105	Glass Antimicrobial Screen Cover	iPad 7th, 8th & 9th Gen 10.2", Air3 10.5"
TP413	Glass Antimicrobial Screen Cover	iPad Mini 6th Gen
TP513-AB	Glass Antimicrobial Screen Cover	iPod Touch 5th, 6th & 7th Gen
TP011-L	Case Connection MFi Lightning Cable	iPad 7th, 8th & 9th Gen 10.2", Air3 10.5" & iPod Touch 5th, 6th & 7th Gen
TP011-C	Case Connection MFi USB-C Cable	iPad 10th Gen 10.9", Air4 & Air5 10.9" & iPad Mini 6th Gen
TP095	Kensington 'Micro-Saver Lock'	For Tough-PAC® Wall Mount
TP015	Case Port Plug (Set of 10)	For all Tough-PAC® Tablet Cases
TP012	Case Screws (Set of 10)	For all Tough-PAC® Tablet Cases
TP520A	Case Screws (Set of 6)	For all Tough-PAC® iPod Cases

Tough-PAC®

iPhone Cases

Tough-PAC® iPhone case is manufactured from TPU material incorporating 'Biomaster' silver biocide additive infused into the case. Biomaster antimicrobial technology is certified to give permanent protection against bacteria, fungi, moulds and viruses,

An anti-bacterial tempered glass screen is optional to provide protection against potentially harmful surface contamination - *please refer to our TP201 range of screen protectors.*

Handy cut outs in the design so all aspects of the iPhone is fully functional.



Key Features & Benefits

- Cushioned corners
- Light weight
- Durable
- Raised rims enhance shock protection
- Allows access to all ports
- Protection against bacteria and viruses

Technical Specifications

- Tested to ISO 22196 specification
- Biomaster anti-microbial Technology

AVAILABLE IN ALL SIZES OF IPHONES
(Minimum orders required)

>99.9 % activity against S. Aureus,
>99.9 % activity against E.coli bacteria

DESCRIPTION

Antimicrobial cases are available for all models of iPhone - Please contact the office for further information and assistance *(Minimum orders may apply)*



Tough-PAC®

iPhone Screen Protector

Tough-PAC® Anti-Bacterial Glass HD is a tempered glass anti-microbial screen protector for all iPhone generations. It adds a layer of screen impact, damage protection, excellent clarity of the user interface without loss of touch sensitivity and is simple to apply, with the added benefit of anti-bacterial activity against contaminating organisms.

Tested to internationally recognised standards; continuously inhibiting or destroying more than 99.9% of contaminating bacteria - peace of mind.



Key Features & Benefits

- Cleanable with anti-microbial wipes (See Website for approved wipes and sprays)
- Anti-bacterial screen protection for all sizes of iPhone
- Easy to apply; auto absorbed
- Fingerprint resistant
- Bubble resistant
- Shatter-Proof
- Re-usable

Technical Specifications

- Anti-bacterial technology
- Japanese Tempered Glass
- Thickness 0.33 mm
- Tested to ISO 22196 specification

AVAILABLE IN ALL SIZES OF IPHONES

- >99.9 % activity against S. Aureus,
- >99.9 % activity against E.coli bacteria

DESCRIPTION

Anti-bacterial Tempered Glass Screen Protector- Please contact the office for further information and assistance



Tough-PAC®

Secure Locker

Tough-PAC®'s versatility as a mobile computer system is further enhanced with an optional Secure Locker. This may be useful where devices are kept in an open area, for added physical security.

The locker provides space for all power supplies and up to 3 Tough-PAC® PDA charge hubs with 12 devices, making a clean and calm installation with added peace of mind.

Doors may be colour coded for a department or team and a choice of either key or combination locks. The anti-microbial powder coating paint reduces bacterial contamination and may be wiped clean with industry standard cleaning products.



Key Features & Benefits

- Anti-microbial powder coated paint as standard
- Space for up to 3 Tough-PAC PDA Hub sets, 12 devices
- Shelf for all DC power supplies with rear cable entry port
- May be fixed in position for added security
- Choice of door colours
- Lock options (key or combination)

Technical Specifications

- Powder Coated Steel
- Welded industry standard construction
- Made in United Kingdom
- Size of Locker: 40.8 x 37.3 x 37.3 cm
- Internal size: 38.4 x 37.1 x 35.2 cm

IVT CODE	DESCRIPTION
TP/Locker	Secure Locker for Tough-PAC® PDA Charging Stations



Inner-Vision TECHNOLOGY

an Insight Medical Products Limited Company



Unit 3, Priory Industrial Estate, Tetbury,
Gloucestershire. GL8 8HZ. United Kingdom

✉ Email: info@innervisiontechnology.com

☎ Phone: +44 (0)1666 500055

www.innervisiontechnology.com

Registered in England No:07545093